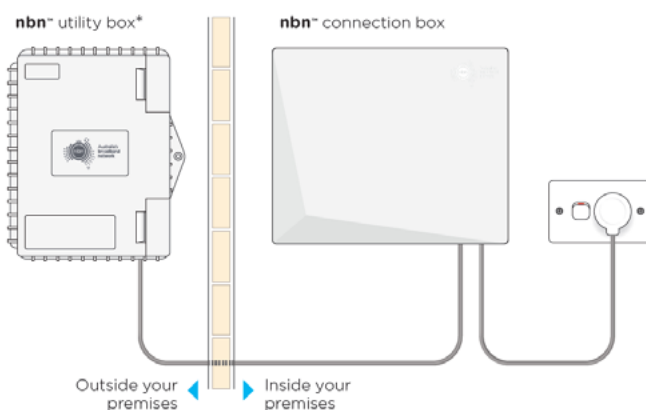


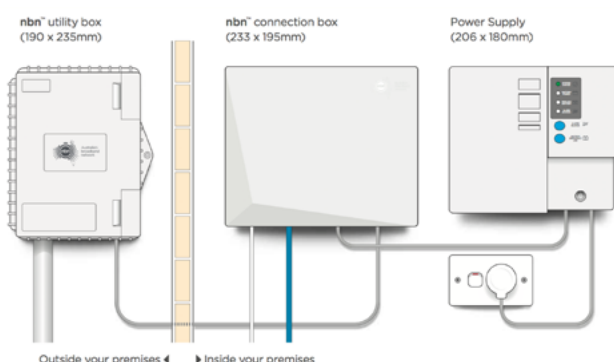
nbn™ Connection Guide - Fibre to the Premises (FTTP)

STEP 1 - Locate the nbn™ FTTP Network Termination Device (NTD)

Find the indoor nbn™ FTTP Network Termination Device (NTD) in your home. This will usually be installed in a garage, but may be located in an odd location such as a wardrobe, cupboard or underneath a staircase. Ensure you check your entire home for the NTD including any unusual places that you may not expect.

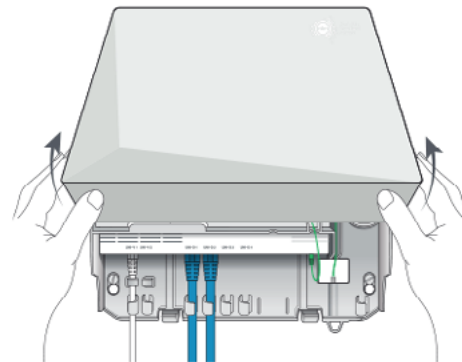


The nbn™ Network Termination Device (NTD) may be installed without a battery backup unit (as shown above) or with an optional battery backup unit. The image below shows the nbn™ Network Termination Device (NTD) installed alongside a battery backup unit. Please note that the battery backup adds little value to an nbn™ FTTP service. If your power is cut, your nbn™ NTD unit will continue to run for a limited time on the battery backup, but your wireless modem/router will not be powered, and any associated services such as a VoIP phone service will also stop working.



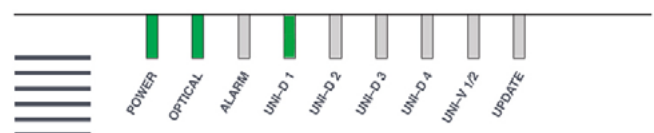
STEP 2 - Connect your modem/router

You will need to plug your modem/router into your nbn™ FTTP Network Termination Device (NTD) to connect your Internet service. First, remove the cover on the NTD to access the ports on the bottom. Press the two clips on either side and lift the cover at an angle (as shown below) to remove it.



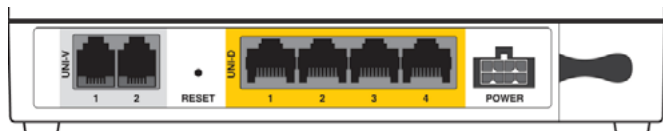
Ensure that the included power cable from the power port on the back of the FTTP Network Termination Device (NTD) is plugged in and secure. Plug the other end of the power cable into a power wall outlet in your home and switch the power point on.

After a few minutes, you should notice the POWER and OPTICAL lights on the front of the NTD turn solid green. If you have a battery backup unit installed, the ALARM button may also be green. If the optical light on your nbn™ FTTP NTD remains red or is off, please contact our support team for further troubleshooting.



Now, take your modem/router's power supply cable and use it to connect your modem/router's power port to an electrical outlet. Switch the power point on. Take your Ethernet cable (this is typically blue, yellow, grey or white) and plug one end into the required yellow port marked UNI-D on the back of the nbn™

FTTP Network Termination Device (NTD). The active UNI-D port would have been sent to you via email and SMS - in many cases this is usually UNI-D1 but may be another number.



Plug the other end of this Ethernet cable into the WAN port on your modem/router. This may also be labelled as INTERNET or WAN/LAN. The Ethernet cable is larger than a telephone cable. DO NOT use the telephone cable to plug in your modem/router to the nbn™ FTTP Network Termination Device (NTD).

Connecting your modem/router - nbn™ Fibre to the Premises (FTTP)

OPTION 1: I chose the Barefoot supplied modem/router

Your Barefoot Communicate modem comes pre-configured and does not require any setup. Simply ensure the supplied yellow Ethernet cable is plugged from the required yellow UNI-D port on your nbn™ FTTP Network Termination Device (NTD), into the blue WAN port on the back of your modem. Ensure the power cable is plugged into a power outlet and switched on.



Your Barefoot modem/router will begin broadcasting Wi-Fi as soon as it is plugged into power, turned on and has finished booting up. You can then connect your devices such as computers, phones and tablets via Wi-Fi.

The modem's Wi-Fi name and password is printed on a separate card included with the modem. The Wi-Fi name and password is also shown on the bottom of the modem as "WiFi Network Name" and "WiFi Password" for both the 2.4GHz and 5GHz networks.



If you have a computer nearby that you would like to connect via Ethernet, take another Ethernet cable and plug one end into any one of the modem's yellow Ethernet ports (labelled LAN).

If you have issues connecting your Barefoot supplied modem/router, please contact our support team at support@barefoottelecom.com.au or 1300 017 622 for further troubleshooting.

OPTION 2: I chose BYO modem/router

Your BYO modem/router will need to be configured with your new Barefoot Communicate nbn™ details to work.

1. First, ensure the supplied yellow Ethernet cable with your modem/router (this is usually yellow, blue, grey or white) is plugged from the required yellow UNI-D port on your nbn™ FTTP Network Termination Device (NTD), into the WAN port on the back of your modem/router. This WAN port may also be labelled as INTERNET or LAN/WAN depending on the make and model of your modem.
2. You will now need to connect your BYO modem/router to your device. You'll need a computer, laptop, tablet or smartphone that is connected to your BYO modem/router via Ethernet or Wi-Fi.
3. Once you have connected your device to your BYO modem/router, open the web browser on your connected device and type in your modem/router's default gateway/admin IP address in the address bar. This will be printed on the bottom or back of your modem depending on the make and model.

Some of the most common addresses are 192.168.1.1, 192.168.20.1, 10.1.1.1 and 10.0.0.138.

4. Once you have accessed the gateway of your modem/router, you may see a login page. If there's a username field, the default username will almost always be admin (it may even already be filled in). The default password is typically admin or password. If you can't log in with these settings, please check the manufacturer's website for your BYO modem/router's default login settings. If your BYO modem router is secondhand or you have used it previously, it may have custom login details set. If you need to, you can factory reset the modem router to return it to the default settings.

5. From here, it gets a little tricky to offer general advice for all BYO modem/routers. The layout of modem/router settings pages can vary greatly for each different modem. If you get stuck or it is not clear where you should change your Internet settings, you need to check the manufacturer's website for support information. Ideally, your modem will have a Setup Wizard or Quick Setup that will run automatically the first time you log in to the settings, or there'll be a fairly obvious button to launch it.

6. The Setup Wizard should run you through entering the required broadband settings, step by step. The most important settings are the following:

- Encapsulation or Connection Type
- Must be set to **PPPoE**

- Connection Mode/Access Type/Service Type
- Must be set to **ETHERNET WAN/RESIDENTIAL GATEWAY/WIRELESS ROUTER MODE**

This will then allow you to enter your username (sometimes called Login) and password which are supplied in your Barefoot Welcome Letter email.

7. After completing the Setup Wizard and saving your settings, give the modem some time. Some modem routers reboot automatically after every new configuration, while others simply need a few minutes to apply the settings. Take a look at the lights on your modem router. Most should now be green, blue, purple or another "positive" colour. Many modem routers have lights that flash to indicate connection activity, so you shouldn't be concerned if any lights are flashing unless the manufacturer's support information specifically advises that flashing lights indicate a problem.

8. Hop on one of your computers or Wi-Fi devices and try to visit a website. If it works, your nbn™ Internet is up and running! If you have issues connecting, please contact our support team at support@barefoottelecom.com.au or 1300 017 622 for further troubleshooting.